



QT SYDNEY

...an eclectic mix of design, art, luxury, style and a touch of quirk.

QT Sydney is a highly curated fusion of cutting-edge art, bold interior design and historical architecture that melds two of the city's most majestic historical buildings, Gowings and The State Theatre, offering a new way to experience a design-led hotel. Set in the very heart of the city's bustling CBD, the hotel is built on the city's fabric, embracing Sydney's cool set in its showcase of exuberant design, world class dining and latenight party scene.

HOTEL FEATURES

- 200 guest rooms, individually tailored for a unique experience
- Gowings Bar & Grill – 120 seat signature restaurant
- Gilt Lounge – late night cocktail bar and lounge, offering hand-crafted cocktails
- Parlour Lane Roasters – European-style cafe by day, aperitivo wine bar by night
- spaQ – luxurious day spa featuring 6 treatment rooms, Hammam-inspired steam room, relaxation lounge and spa boutique
- 24-hour room service
- Valet car parking (fees apply)
- Complimentary high-speed Wi-Fi
- Non-smoking property
- Wheelchair access
- Meeting rooms equipped with complimentary Wi-Fi, LCD screens, HDMI input and wireless microphones
- Private dining rooms and event spaces accommodating up to 200 guests
- 56 seat Screening Room
- Guest Lounge
- Sydney Concierge iPhone app to assist guests in planning their perfect, bespoke trip
- Qtique – luxury boutique
- In-house gym, plus complimentary use of Virgin Active Health Club, Pitt Street Mall for all guests

QUIRKY QT FACTS

- Opened in September 2012, QT Sydney is a member of the exclusive Design Hotels.
- All staff are attired in quirky, avant-garde uniforms styled by acclaimed costume designer Janet Hine.
- Guest rooms are scented with the classic notes of Coco Chanel's famous Chanel N°5.
- The State Theatre building was Australia's first vertical shopping arcade.
- The opulent State Suite 1022 was formerly Sir Norman Rydges' office.
- spaQ treatment rooms 5 and 6 are the original Gowings Barber.

For enquiries, email:
Press_qtsydney@evt.com

ROOM STYLES

QT KING

Designer furnished room fit for royalty, featuring luxurious QT King Bed, work space and large bathroom with walk-in shower.

QT KING DELUXE

Decadent room with luxurious QT King Bed or Zipper King, work space, large bathroom with freestanding or Japanese bath, separate walk-in shower and designer furnishings.

QT JUNIOR SUITE

Spacious, designer furnished suite featuring QT King Bed or Zipper King, work space, large bathroom with freestanding or Japanese bath and separate walk-in shower.

QT CORNER SUITE

Coveted corner suite boasting city views and opulent settings, complete with QT King Bed or Zipper King, work space, large bathroom with freestanding or Japanese bath and separate walk-in shower, and designer furnishings.

QT STATE SUITE

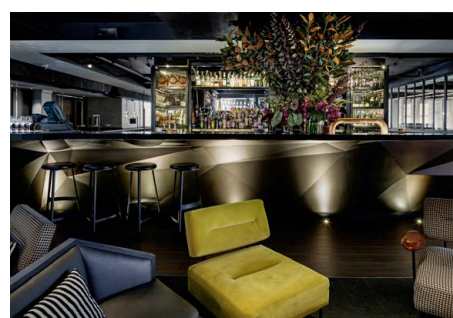
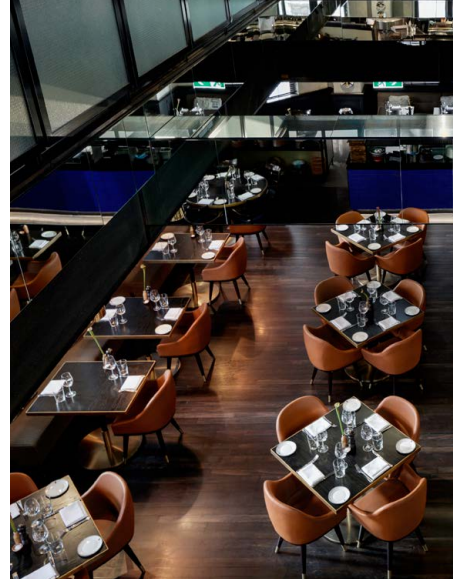
A whole new level of luxury, with QT King Bed or Zipper King, work space, large bathroom with freestanding or Japanese bath, separate walk-in shower and designer furnishings.

ROOM FEATURES

- Luxurious bespoke QT signature king bed featuring a QT King gel mattress, weighing in at 82kg
- Large ensuite bathroom with indulgent, oversized freestanding or Japanese bath (excluding QT King rooms) & separate walk-in shower
- Flatscreen HD TV
- iPod dock
- Workspace
- Mini bar
- Deluxe Usps amenities
- Designer furnishings
- Complimentary Wi-Fi, in-room movies and Nespresso machine
- Digital art by Grant Stevens & bespoke art by Morgan Shimeld

COLLABORATORS

Nic Graham – Public Areas Designer & Stylist
Shelly Indyk – Guest Rooms Designer & Stylist
Fabio Ongarato - Branding & Identity
Janet Hine – Costume Design & Supervision
Robert Marchetti – Creative Food Director
Naomi Gregory – Spa Consultant
Anna Roberts – Stylist



QT

SYDNEY


49 Market St,
Sydney NSW 2000

P +61 (02) 8262 000

qtsydney.com.au

 [facebook.com/QTSydney](https://www.facebook.com/QTSydney)

 [@QTHotelsResorts](https://twitter.com/QTHotelsResorts)

 [@qt_hotels](https://www.instagram.com/qt_hotels)

#QTSydney #QTstyle